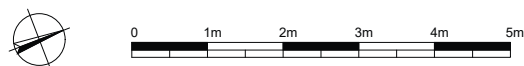
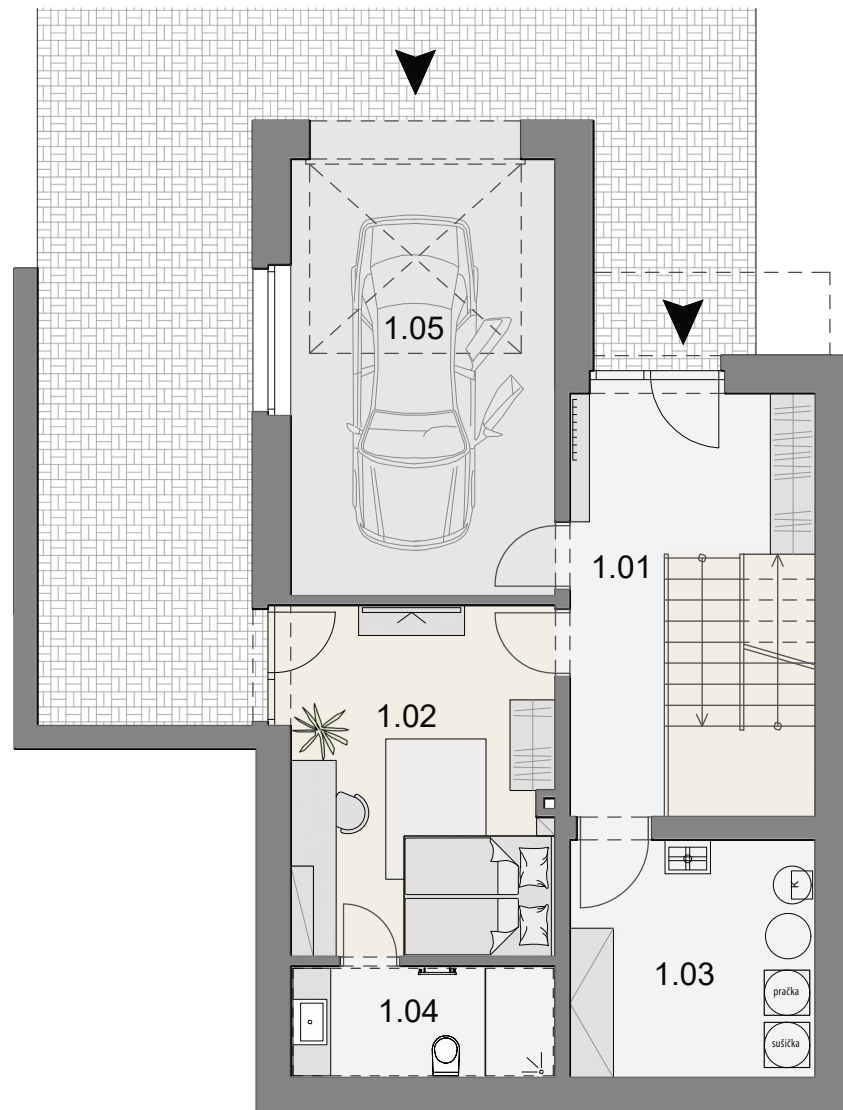


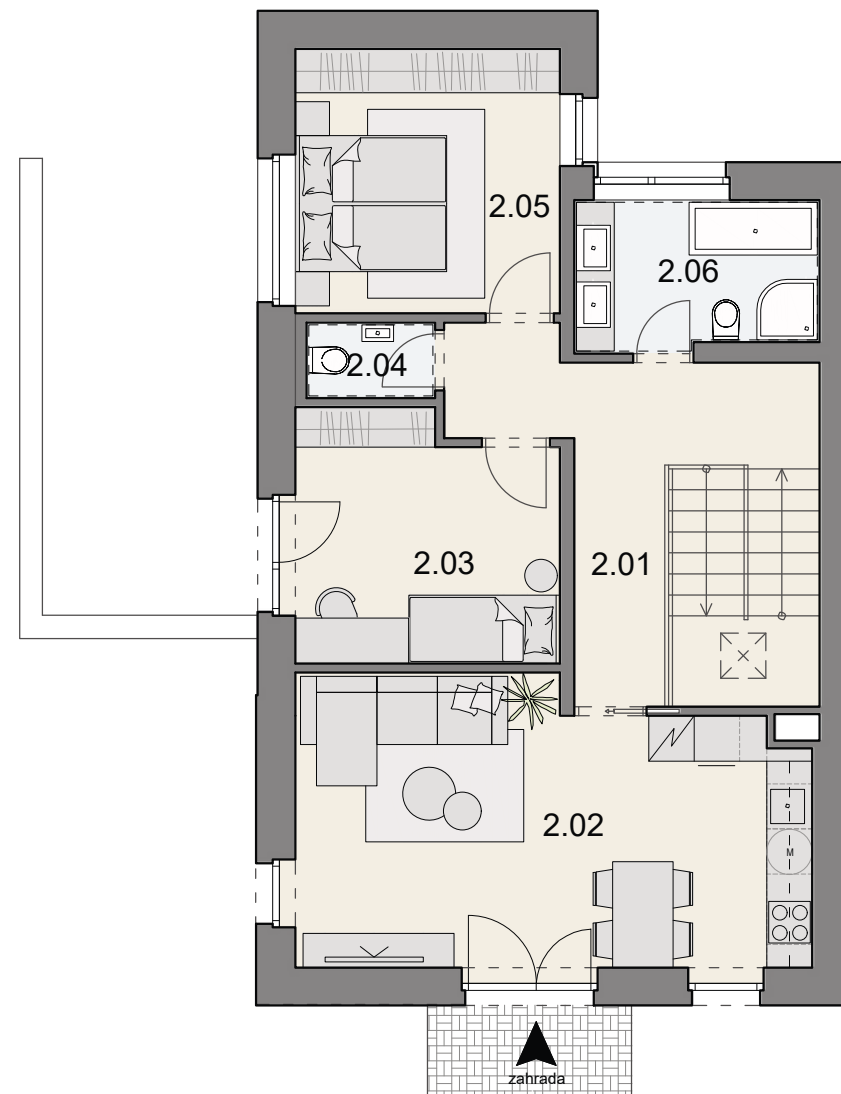
# 1.NP

1:100



# 2.NP

1:100



## RODINNÝ DŮM B9



|      |                         |      |                |
|------|-------------------------|------|----------------|
| 1.01 | VSTUPNÍ HALA A ŠATNA    | 18,3 | m <sup>2</sup> |
| 1.02 | LOŽNICE                 | 16,2 | m <sup>2</sup> |
| 1.03 | TECHNICKÁ MÍSTNOST      | 10,3 | m <sup>2</sup> |
| 1.04 | KOUPELNA S WC           | 5,1  | m <sup>2</sup> |
| 1.05 | GARÁŽ                   | 20,2 | m <sup>2</sup> |
| 2.01 | CHODBA                  | 11,5 | m <sup>2</sup> |
| 2.02 | OBÝVACÍ POKOJ S KUCHYNÍ | 25,0 | m <sup>2</sup> |
| 2.03 | POKOJ                   | 10,7 | m <sup>2</sup> |
| 2.04 | WC                      | 1,7  | m <sup>2</sup> |
| 2.05 | LOŽNICE                 | 12,2 | m <sup>2</sup> |
| 2.06 | KOUPELNA                | 6,3  | m <sup>2</sup> |

|                          |       |                |
|--------------------------|-------|----------------|
| Celková Úžitná plocha    | 137,4 | m <sup>2</sup> |
| Celková plocha pozemku   | 310,6 | m <sup>2</sup> |
| Celková zastavěná plocha | 90,8  | m <sup>2</sup> |

